

FLOOR PLAN
BLDG FOOTPRINT 5689 sf

HS-5 - 2HR FIRE RATED CEILING (infant sleep area)

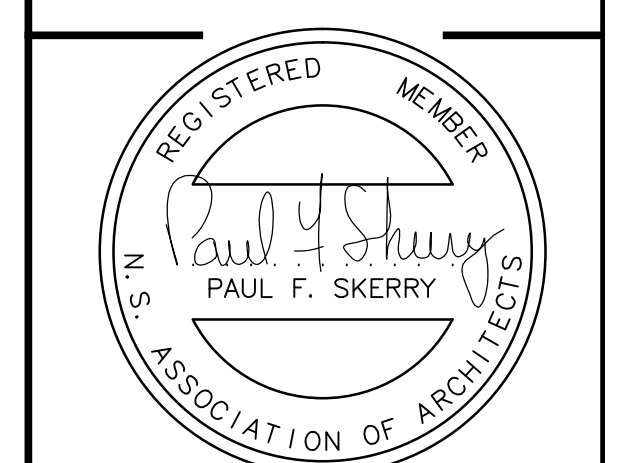
| | | | |
|--|--|--------------|------|
| | • 15.9 mm (5/8") SHEETROCK FIRECODE Core Gypsum Panels 4 layers - steel furring channel between 3rd and 4th layers - Wood joists, steel C-joists or engineered wood structural components - 2 hour finish rating | ULC Des M514 | B-68 |
| | clg. wt. 3 Wood joists, steel C-joists, or engineered wood structural components | | |

VS-6 - 2HR FIRE RATED PARTITION (infant sleep area)

| | | | |
|--|---|--------------|------|
| | • 15.9 mm (5/8") SHEETROCK FIRECODE C Core Gypsum Panels - 92 mm (3-5/8") zoga steel structural studs 610 mm (24") o.c. - face layer joints finished • Alternate design three layers 12.7 mm (1/2") SHEETROCK FIRECODE C Core Gypsum Panels | ULC Des W424 | A-50 |
| | vl. 12 66 mm (6 1/4") | | |

- NOTES:
- 1) THE CONTRACTOR IS RESPONSIBLE FOR CHECKING ALL DIMENSIONS ON SITE & REPORTING ANY DISCREPANCY TO THE ARCHITECT BEFORE PROCEEDING.
 - 2) DO NOT SCALE FROM DRAWINGS. USE FIGURED DIMENSIONS.
 - 3) DRAWING REPRESENTATIONS MAYBE IN VARIANCE W/ DETAILED SPECS. & SCHEDULES, IN WHICH CASE SPECS. & SCHEDULES OVERRIDE THE DRAWINGS.
 - 4) CHANGES FROM THESE PLANS & SPECS. MUST BE AGED TO IN WRITING, & APPROVED BY THE ARCHITECT & OWNER, BEFORE PROCEEDING.
 - 5) ONLY THOSE DRAWINGS MARKED APPROVED FOR CONSTRUCTION, SIGNED & DATED BY THE ARCHITECT ARE TO BE USED FOR CONSTRUCTION.
 - 6) THESE DRAWINGS ARE TO BE READ IN CONJUNCTION W/ THE SPECS.

Paul Skerry Associates Ltd.
ARCHITECTS
 5514 LIVINGSTONE PLACE
 HALIFAX, N.S. B3K 2B9
 PHONE: 902-455-4361
 FAX: 902-455-7778
 EMAIL: pskerry@pskerry.ca



| No. | DESCRIPTION | Date |
|-----|---------------------------------------|---------|
| 02 | exit door added to infant room | 3-22/13 |
| 01 | infant sleep area revised fire rating | 3-21/13 |

REVISIONS

PROJECT
 PROSPECT BAY DAYCARE CENTRE
 PROSPECT, N.S.

TITLE:
 FLOOR PLAN

drawn by: STAFF
 checked: P.S.
 date: DEC.23/11
 approved: P.S.
 scale: 3/16"=1'-0"
 project #: 2841
 dwg #: A3